

TORO B Range			TORO B-203/C	TORO B-202/C	TORO B-201/C	TORO B-202 PLUS	TORO B-201 PLUS
Number of sections			5	4	3	4	3
Maximum load			220 kg 485 lb	230 kg 507 lb	250 kg 551 lb	230 kg 507 lb	250 kg 551 lb
Weight			139 kg 306 lb	132 kg 291 lb	125 kg 276 lb	141 kg 311 lb	125 kg 276 lb
STOWED							
Height	A		166 cm 5 ft 5.5 in	166 cm 5 ft 5.5 in	166 cm 5 ft 5.5 in	196 cm 6 ft 5 in	196 cm 6 ft 5 in
Length	B		88 cm 2 ft 10.5 in	88 cm 2 ft 10.5 in	88 cm 2 ft 10.5 in	88 cm 2 ft 10.5 in	88 cm 2 ft 10.5 in
Width	C		65 cm 2 ft 1.5 in	65 cm 2 ft 1.5 in	65 cm 2 ft 1.5 in	65 cm 2 ft 1.5 in	65 cm 2 ft 1.5 in
WORKING MEASUREMENTS							
Maximum height	Forks up	D ₁	630 cm 20 ft 8 in	515 cm 16 ft 11 in	400 cm 13 ft 1.5 in	650 cm 21 ft 4 in	500 cm 16 ft 5 in
	Forks down	D ₂	605 cm 19 ft 10 in	490 cm 16 ft 1 in	375 cm 12 ft 3.5 in	610 cm 20 ft	460 cm 15 ft 1 in
Length	Front legs	E ₁	177 cm 5 ft 9.5 in	177 cm 5 ft 9.5 in	177 cm 5 ft 9.5 in	177 cm 5 ft 9.5 in	177 cm 5 ft 9.5 in
	Back legs	E ₂	167 cm 5 ft 5.5 in	167 cm 5 ft 5.5 in	167 cm 5 ft 5.5 in	167 cm 5 ft 5.5 in	167 cm 5 ft 5.5 in
Width		F	60 cm 1 ft 11.5 in	60 cm 1 ft 11.5 in	60 cm 1 ft 11.5 in	60 cm 1 ft 11.5 in	60 cm 1 ft 11.5 in
Leg height		G	28 cm 11 in	28 cm 11 in	28 cm 11 in	28 cm 11 in	28 cm 11 in
Width w/ stabilisers unfolded		H	136 cm 4 ft 5.5 in	136 cm 4 ft 5.5 in	136 cm 4 ft 5.5 in	136 cm 4 ft 5.5 in	136 cm 4 ft 5.5 in
Distance to the wall		I	65 cm 2 ft 1.5 in	65 cm 2 ft 1.5 in	65 cm 2 ft 1.5 in	65 cm 2 ft 1.5 in	65 cm 2 ft 1.5 in
Load height		J	28 cm 11 in	28 cm 11 in	28 cm 11 in	29 cm 11.5 in	29 cm 11.5 in
FORKS							
Length		K	66 cm 2 ft 2 in	66 cm 2 ft 2 in	66 cm 2 ft 2 in	66 cm 2 ft 2 in	66 cm 2 ft 2 in
Maximum width		L _{MAX}	42.5 cm 1 ft 4.5 in	42.5 cm 1 ft 4.5 in	42.5 cm 1 ft 4.5 in	42.5 cm 1 ft 4.5 in	42.5 cm 1 ft 4.5 in
Minimum width		L _{min}	30 cm 12 in	30 cm 12 in	30 cm 12 in	30 cm 12 in	30 cm 12 in

TORO B-Range

Material Lifts



	TORO B-201/C	TORO B-201 PLUS	TORO B-202/C	TORO B-202 PLUS	TORO B-203/C
↑	4,00 m 13 ft 1.5 in	5,00 m 16 ft 5 in	5,15 m 16 ft 11 in	6,50 m 21 ft 4 in	6,30 m 20 ft 8 in
⬇️ / kg	250 kg 551 lb	250 kg 551 lb	230 kg 507 lb	230 kg 507 lb	220 kg 485 lb
↓	1,66 m 5 ft 5.5 in	1,96 m 6 ft 5 in	1,66 m 5 ft 5.5 in	1,96 m 6 ft 5 in	1,66 m 5 ft 5.5 in
⬆️ / kg	125 Kg 276 lb	125 Kg 276 lb	132 Kg 291 lb	141 Kg 311 lb	139 Kg 306 lb

TORO B-Range Details

TORO MATERIAL LIFTS ARE EQUIPPED WITH TWO SAFETY SYSTEMS



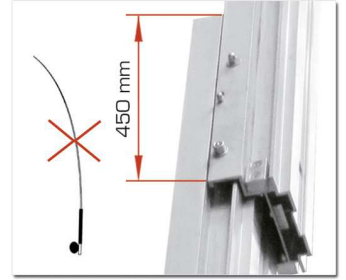
Auto-brake winch.
CE Machinery Directives



Internal Pendulum
Brake System (IPB)



Mast Section Unblocking
System (MSU)



More mast overlap.
Prevents fishing rod effect



Adjustable manoeuvring handle
with wheels included.



Reinforced forks included.
(Detachable). Reversible
& Adjustable design.



2 Stabiliser braces for
greater lift stability.



Adjustable mast blocking
system for horizontal trans-
portation.



Spirit level



Folding side legs
included

Legs can be inserted in
the front or back of the
tower for positioning close
to walls.



Adjustable legs

Compact designs and 12 wheels included for
easy manoeuvring (Vertically and horizontally)



Ø150 mm adjustable
wheels for perfect levelling.



HRT HORQUILLAS FORK



INCLUIDAS INCLUDED

ACT-01 DISEÑO CURVO PIPE CRADLE



ACT-04 PLATAFORMA LOAD PLATFORM



ACT-04/M
Madera Plywood
Aluminio Aluminium

***ACT-02** PROLONGADORES FORK EXTENSIONS



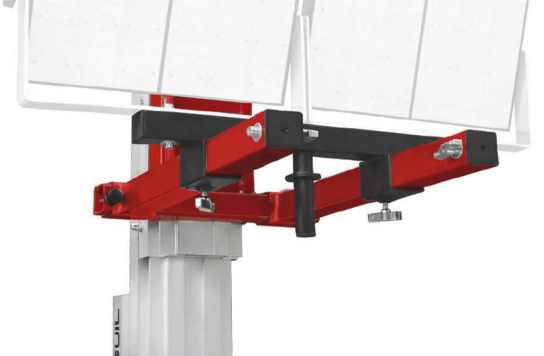
***ACT-05** PLUMA CON GANCHO LOAD HOOK ARM



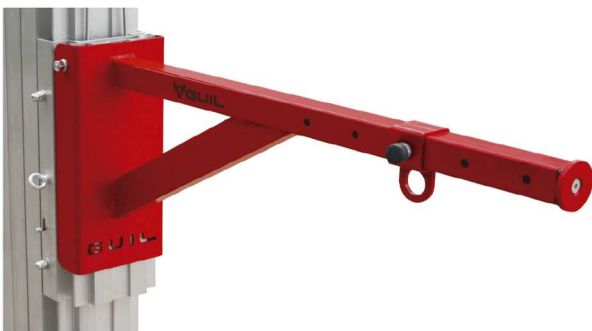
ACT-06 PERSIANAS Y PUERTAS ENROLLABLES ROLLER DOOR & WINDOW SHUTTERS



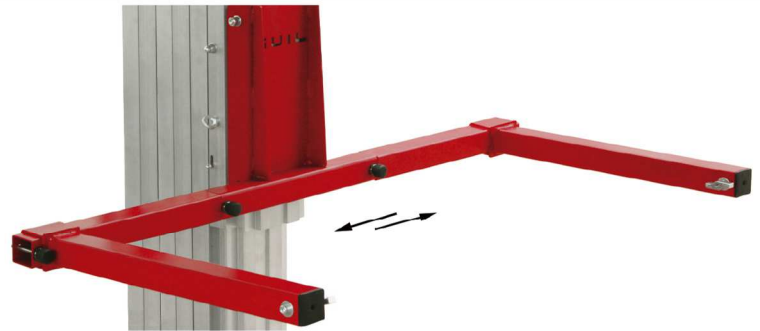
ACT-07 ADAPTADOR PARA ILUMINACIÓN FLOOD LIGHT ADAPTOR



***ACT-08** PLUMA CON 5 POSICIONES 5-POSITION BOOM ARM



***ACT-09** EXPANSOR DE HORQUILLAS FORK WIDENER



CONTRAPESOS Y BANDEJA COUNTERWEIGHTS & HOLDER



***CB-01**

***CW-01/20**
20 KG



SISTEMA DE ELEVACIÓN ELÉCTRICO ELECTRIC LIFTING SYSTEM

***ELECTRIC**

2 Sistemas en 1 - Manual y Eléctrico
Práctico sistema que permite elevar la carga de manera eléctrica.
2 Systems in 1 - Manual & Electric
Practical system that allows you to raise the load electrically.



*Adaptador no válido para elevadores TORO Serie A

*This adaptor is not suitable for the A-Range towers.

Ref. ACT-08

Ref. ACT-10



VIDRIO
GLASS



CUBRECABLES PARA LOS ELEVADORES TORO CABLE COVER FOR **TORO** LIFTERS



Ref. **CBC**

SISTEMA DE ELEVACIÓN ELÉCTRICO ELECTRIC LIFTING SYSTEM



ELECTRIC

Electric Lifting System for TORO Lifters (B - C - D Ranges)



With this practical and very safe system, you have the possibility to raise and lower the TORO material lifts electrically (ranges B, C and D); converting the manual towers into electric towers.

The 'ELECTRIC' system is a very useful accessory which allows you to quickly and effortlessly raise the TORO lifters guaranteeing utmost safety at all times.

The accessory is made up of an industrial drill (brand: METABO, Germany), a power reducer and an adaptor to secure it to the hand winch on the lifter.

The adaptor ensures a firm fix of the drill so that the user is not required to hold the drill in place, allowing to work with just one hand.



The 'ELECTRIC' system is installed quickly and easily and has the following references depending on the tower it will be used with:

TORO B-Range towers — ref. ELECTRIC-B/2

Adapter and drill for ELECTRIC operation of TORO B-Range Lifts. Price includes a single-handled AL-KO 901 winch to replace the double-handled BULL300-D (Net Weight: 7.30 kg – without winch)

TORO C-Range towers — ref. ELECTRIC-C/2

Adapter and drill for ELECTRIC operation of TORO C- & E-Range Lifts. Price includes a single-handled AL-KO 901 winch to replace the double-handled BULL400-D (Net Weight: 7.30 kg – without winch)

TORO D-Range towers — ref. ELECTRIC-D/2

Adapter and drill for ELECTRIC operation of TORO D-Range Lifts. (Net Weight: 7.10 kg)

NOTE: When this electric system is used the TORO D-Range towers have a maximum load capacity of 350 kg.

APPLICATIONS

GUIL manufactures a wide range of innovative material lifts, adapters and accessories designed to cover the needs for a large variety of applications:

| HVAC

| GLASS

| AWNINGS & SHELTERS

| ROLLER SHUTTERS & BLINDS

| INSTALLATIONS

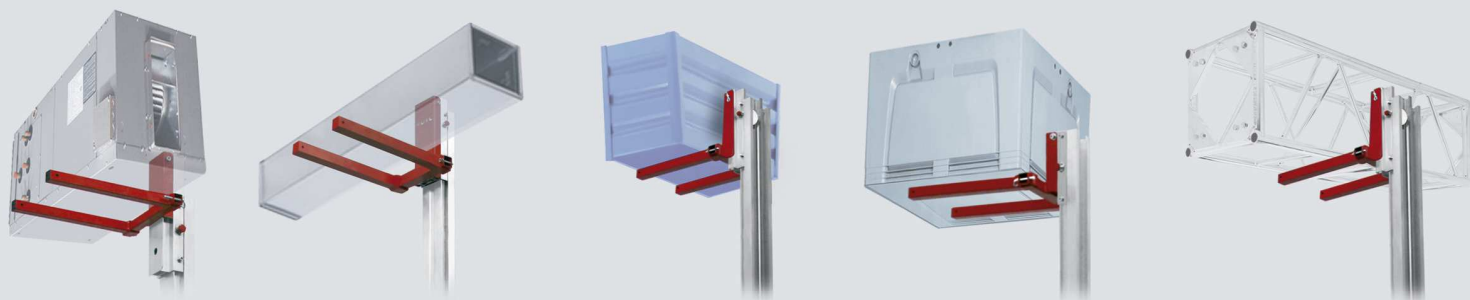
| MAINTENANCE WORK

| PIPING & DUCTS

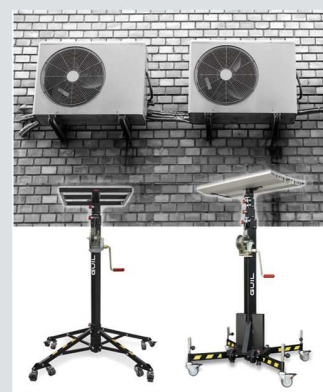
| METALWORK

| CARPENTRY

| EXHIBITION STANDS



CHOOSE A MODEL & LIFT YOUR LOAD



MADE IN SPAIN
www.guil-lifters.com



P.I. La Creu C/ Ismael Tomás Alacreu, 28-30 - CP 46250 L'Alcúdia (Valencia) SPAIN
Fax +34 962540833 Tel +34 962996500 info@guil.es

GUIL - YOUR EUROPEAN LIFTING TOWER MANUFACTURER

